

Lenovo

ThinkSystem DE Series Windows express configuration Release 11.70.2



Machine Types: DE2000H (7Y70, 7Y71), DE4000H (7Y74, 7Y75, 7Y77), DE4000F (7Y76), DE6000H (7Y78, 7Y80), DE6000F (7Y79), DE120S (7Y63), DE240S (7Y68), and DE600S (7Y69)

First edition (January 2022)

© Copyright Lenovo 2022.

LIMITED AND RESTRICTED RIGHTS NOTICE: If data or software is delivered pursuant to a General Services Administration (GSA) contract, use, reproduction, or disclosure is subject to restrictions set forth in Contract No. GS-35F-05925

Contents

1. Windows express configuration overview	1
1.1. Procedure overview	1
1.2. Find more information	1
2. Assumptions	2
3. Understand the Windows workflow	4
4. Verify the Windows configuration is supported	6
5. Configure IP addresses using DHCP	7
6. Configure the multipath software	8
6.1. Installing Lenovo ThinkSystem DSM Installer for DE Series	8
7. Install and configure Lenovo ThinkSystem Host Utilities for Windows for DE Series	9
8. Install ThinkSystem Host Utilities for Host Context Agent (HCA)	10
9. Access ThinkSystem System Manager and use the Setup wizard	11
10. Perform FC-specific tasks	13
10.1. Step 1: Configuring the FC switches—Windows	13
10.2. Step 2: Determining host WWPNs and making the recommended settings—FC, Windows	13
10.3. Step 2: FC worksheet for Windows	14
10.3.1. Host identifiers	15
10.3.2. Target identifiers	15
10.3.3. Mapping host	15
11. Perform iSCSI-specific tasks	16
11.1. Step 1: Configuring the switches—iSCSI, Windows	16
11.2. Step 2: Configuring networking—iSCSI Windows	16
11.3. Step 3: Configuring array-side networking—iSCSI, Windows	17
11.4. Step 4: Configuring host-side networking—iSCSI	20
11.5. Step 5: Verifying IP network connections—iSCSI, Windows	21
11.6. Step 6: Recording iSCSI-specific information for Windows	22
11.7. iSCSI worksheet—Windows	22
11.7.1. Recommended configuration	23
11.7.2. Target IQN	23
11.7.3. Mappings host name	23
12. Perform SAS-specific tasks	24
12.1. Step 1: Determining SAS host identifiers—Windows	24
12.2. Step 2: Recording SAS-specific information for Windows	24
12.3. Step 3: SAS worksheet—Windows	24
12.3.1. Host Identifiers	25
12.3.2. Target identifiers	25
12.3.3. Mappings host	25
13. Discover storage on the host	26
14. Configure storage on the host	27

15. Verify storage access on the host	29
16. Appendix	30
16.1. Contacting support	30
16.2. Notices	30
16.3. Trademarks	31

Chapter 1. Windows express configuration overview

The Windows express method for installing your storage array and accessing ThinkSystem System Manager is appropriate for setting up a standalone Windows host to a DE Series system. It is designed to get the storage system up and running as quickly as possible with minimal decision points.

1.1. Procedure overview

The express method includes the following steps.

1. Setting up one of the following communication environments:
 - Fibre Channel (FC)
 - iSCSI
 - SAS
2. Creating logical volumes on the storage array.
3. Making the volumes available to the data host.

1.2. Find more information

- Online help — Describes how to use ThinkSystem System Manager to complete configuration and storage management tasks. It is available within the product.
- [Lenovo ThinkSystem Storage Documentation Center DE Series](#) (a database of articles) — Provides troubleshooting information, FAQs, and instructions for a wide range of Lenovo products and technologies.
- Lenovo ThinkSystem Host Utilities for Windows for DE Series Installation Guide under the Lenovo Documentation — Host Utilities (current releases) describes how to install and use the Lenovo ThinkSystem Host Utilities for Windows for DE Series .

Chapter 2. Assumptions

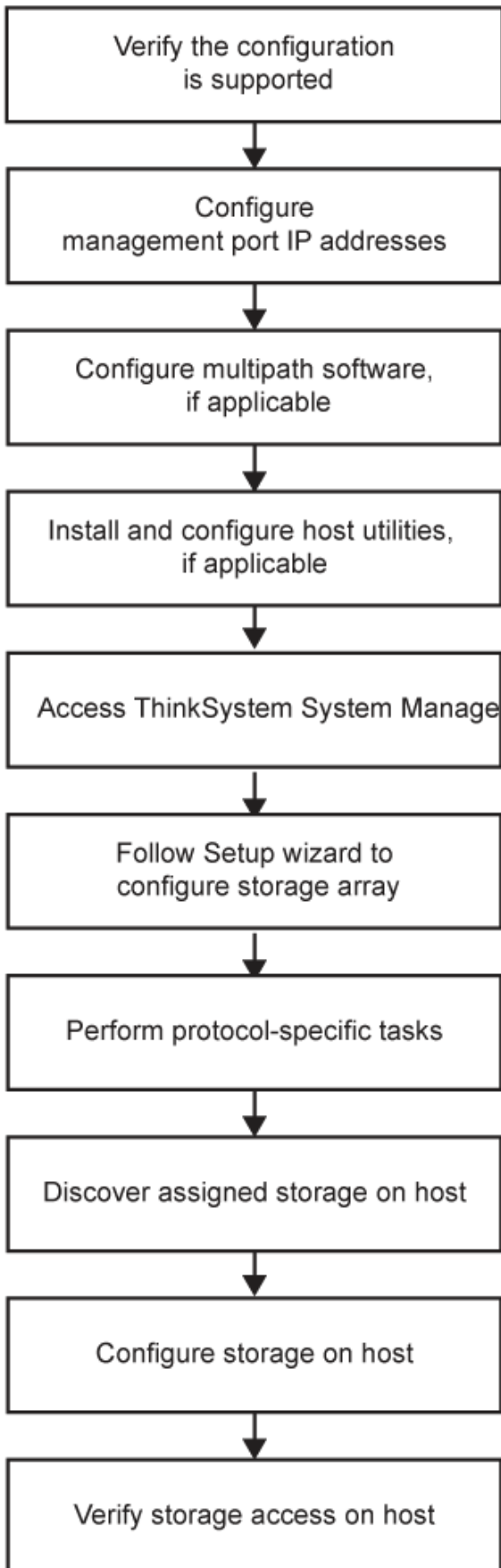
The Windows express method is based on the following assumptions:

Component	Assumptions
Hardware	<ul style="list-style-type: none">• You have used the Installation and Setup Instructions included with the controller shelves to install the hardware.• You have connected cables between the optional drive shelves and the controllers.• You have applied power to the storage system.• You have installed all other hardware (for example, management station, switches) and made the necessary connections.
Host	<ul style="list-style-type: none">• You have made a connection between the storage system and the data host.• You have installed the host operating system.• You are not using Windows as a virtualized guest.• You are not configuring the data (I/O attached) host to boot from SAN.
Storage management station	<ul style="list-style-type: none">• You are using a 1 Gbps or faster management network.• You are using a separate station for management rather than the data (I/O attached) host.• You are using out-of-band management, in which a storage management station sends commands to the storage system through the Ethernet connections to the controller.• You have attached the management station to the same subnet as the storage management ports.
IP addressing	<ul style="list-style-type: none">• You have installed and configured a DHCP server.• You have not yet made an Ethernet connection between the management station and the storage system.
Storage provisioning	<ul style="list-style-type: none">• You will not use shared volumes.• You will create pools rather than volume groups.

Component	Assumptions
Protocol: FC	<ul style="list-style-type: none"> • You have made all host-side FC connections and activated switch zoning. • You are using Lenovo-supported FC HBAs and switches. • You are using FC HBA driver and firmware versions as listed in the Lenovo Storage Interoperation Center (LSIC).
Protocol: iSCSI	<ul style="list-style-type: none"> • You are using Ethernet switches capable of transporting iSCSI traffic. • You have configured the Ethernet switches according to the vendor's recommendation for iSCSI.
Protocol: SAS	<ul style="list-style-type: none"> • You are using Lenovo-supported SAS HBAs. • You are using SAS HBA driver and firmware versions as listed in the Lenovo Storage Interoperation Center (LSIC).

Chapter 3. Understand the Windows workflow

This workflow guides you through the express method for configuring your storage array and ThinkSystem System Manager to make storage available to a Windows host.

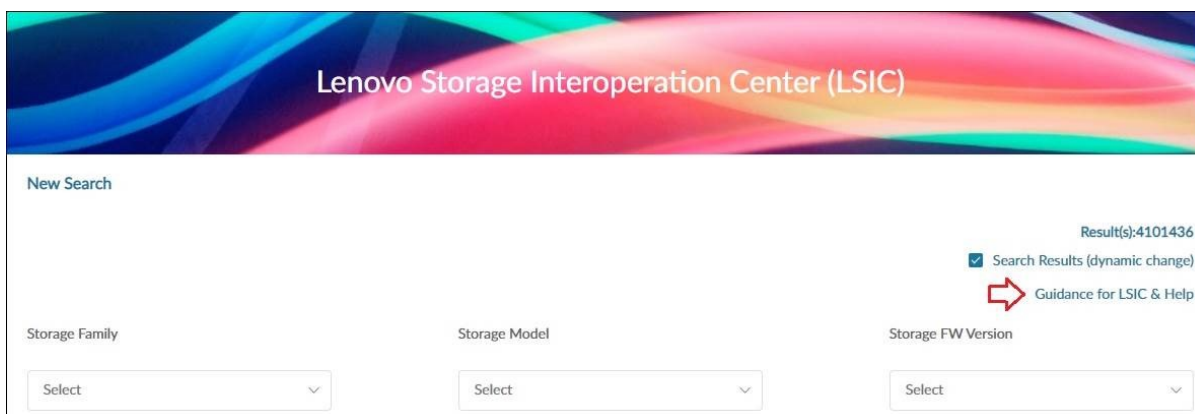


Chapter 4. Verify the Windows configuration is supported

To ensure reliable operation, you create an implementation plan and then use the Lenovo Storage Interoperation Center (LSIC) to verify that the entire configuration is supported.

Steps

1. Go to [Lenovo Storage Interoperation Center \(LSIC\)](#) for interop support configuration.
2. Choose your storage model, firmware, protocol, HBA, and operating system and click [here](#) for guidance on how to use LSIC to search the products support configuration.



3. As necessary, make the updates for your operating system and protocol as listed in the table.

Operating system updates	Protocol	Protocol-related updates
<p>You might need to install out-of-box drivers to ensure proper functionality and supportability.</p> <p>Each HBA vendor has specific methods for updating boot code and firmware. Refer to the support section of the vendor's website to obtain the instructions and software necessary to update the HBA boot code and firmware.</p>	FC	Host bus adapter (HBA) driver, firmware, and bootcode
	iSCSI	Network interface card (NIC) driver, firmware and bootcode.
	SAS	Host bus adapter (HBA) driver, firmware, and bootcode

Chapter 5. Configure IP addresses using DHCP

To configure communications between the management station and the storage array, use Dynamic Host Configuration Protocol (DHCP) to provide IP addresses.

Each storage array has two controllers (duplex), and each controller has two storage management ports. Each controller has two management ports but only one is useable by the customer.

Before you begin

You have installed and configured a DHCP server on the same subnet as the storage management ports.

About this task

The following instructions refer to a storage array with two controllers (a duplex configuration).

Steps

1. If you have not already done so, connect an Ethernet cable to the management station and to management port 1 on each controller (A and B).

The DHCP server assigns an IP address to port 1 of each controller.



Do not use management port 2 on either controller. Port 2 is reserved for use by Lenovo technical personnel.



If you disconnect and reconnect the Ethernet cable, or if the storage array is power-cycled, DHCP assigns IP addresses again. This process occurs until static IP addresses are configured. It is recommended that you avoid disconnecting the cable or power-cycling the array.

If the storage array cannot get DHCP-assigned IP addresses within 30 seconds, the following default IP addresses are set:

- Controller A, port 1: 169.254.128.101
 - Controller B, port 1: 169.254.128.102
 - Subnet mask: 255.255.0.0
2. Locate the MAC address label on the back of each controller, and then provide your network administrator with the MAC address for port 1 of each controller.

Your network administrator needs the MAC addresses to determine the IP address for each controller. You will need the IP addresses to connect to your storage system through your browser.

Chapter 6. Configure the multipath software

Multipath software provides a redundant path to the storage array in case one of the physical paths is disrupted. Before you can use multipathing, you need to install the Lenovo ThinkSystem DSM Installer for DE Series. This installer contains the multipath software for Windows.

Windows installations use the native MPIO Device Specific Module(DSM) driver for failover. When you install Lenovo ThinkSystem DSM Installer for DE Series, the DSM driver is installed and enabled.

When installing the DSM for Windows, you must first install optional Microsoft multipath I/O (MPIO) feature through the Server Manager console or by following the command under PowerShell with administrator privilege:

```
Enable-WindowsOptionalFeature -Online -FeatureName MultiPathIO
```

Once completed, you must reboot system and install the DSM by installing the [Lenovo ThinkSystem DSM Installer for DE Series](#) package. The Microsoft multipath I/O feature must be installed prior to installing the DSM for MPIO to work properly.

6.1. Installing Lenovo ThinkSystem DSM Installer for DE Series

Perform the following steps to install the Lenovo ThinkSystem DSM Installer for DE Series and use the multipath package for Windows.

Before you begin

- You must have the correct administrator or superuser privileges.

You will install the Lenovo ThinkSystem DSM Installer for DE Series on the management station.

Steps

1. Download the Lenovo ThinkSystem DSM Installer for DE Series from [Lenovo Data Center Support](#).
2. Run the Lenovo ThinkSystem DSM Installer for DE Series. Double-click the installer to execute.
3. Use the installation wizard to install the package on the management station.

Chapter 7. Install and configure Lenovo ThinkSystem Host Utilities for Windows for DE Series

Lenovo ThinkSystem Host Utilities for Windows for DE Series includes tools to help you to connect host computers to Lenovo storage systems and set required parameters on host computers. You can also set appropriate disk timeouts for best read/write performance with Lenovo storage.

Steps

1. Use the [Lenovo Storage Interoperation Center \(LSIC\)](#) to determine the appropriate version of Unified Host Utilities 7.0 to install.

The versions are listed in a column within each supported configuration.

2. Download the Unified Host Utilities from [Lenovo Data Center Support](#).



This utilities package cannot be installed using the ThinkSystem Storage Manager installer.



Alternatively, you can use the **SMdevices** utility to perform the same functions as the Host Utilities for Windows. The **SMdevices** utility is included as part of the **SMutils** package. The **SMutils** package is a collection of utilities to verify what the host sees from the storage array. It is included as part of the Lenovo ThinkSystem Host Utilities.

Chapter 8. Install ThinkSystem Host Utilities for Host Context Agent (HCA)

By installing the ThinkSystem Host Utilities on the host, the Host Context Agent is installed that helps the host push configuration information to the storage array controllers through the I/O path.

Before you begin

- You must have the correct administrator or superuser privileges.
- You must have ensured that the system that will contain the ThinkSystem Storage Manager client has the following minimum requirements:
 - **RAM:** 2 GB for Java Runtime Engine
 - **Disk space:** 5 GB
 - **OS/Architecture:** Refer to [Lenovo Data Center Support Downloads](#) > **Software** > **DE-Series ThinkSystem Storage Manager** for guidance on determining the supported operating system versions and architectures.

Steps

1. Download the Lenovo ThinkSystem Host Utilities from [Lenovo Data Center Support](#) by searching "Lenovo ThinkSystem Host Utilities".
2. Run the Lenovo ThinkSystem Host Utilities. Double-click the `lnvgy_utl_hostutilities_*.exe` install package to execute.
3. Use the installation wizard to install the software on the management station.

Chapter 9. Access ThinkSystem System Manager and use the Setup wizard

You use the Setup wizard in ThinkSystem System Manager to configure your storage array.

Before you begin

- You have ensured that the device from which you will access ThinkSystem System Manager contains one of the following browsers:

Browser	Minimum version
Google Chrome	47
Microsoft Internet Explorer	11
Microsoft Edge	EdgeHTML 12
Mozilla Firefox	31
Safari	9

- You are using out-of-band management.

About this task

If you are an iSCSI user, make sure you have closed the Setup wizard while configuring iSCSI.

The wizard automatically relaunches when you open System Manager or refresh your browser and *at least one* of the following conditions is met:

- No pools and volume groups are detected.
- No workloads are detected.
- No notifications are configured.

If the Setup wizard does not automatically appear, contact technical support.

Steps

1. From your browser, enter the following URL: <https://<DomainNameOrIPAddress>>

IPAddress is the address for one of the storage array controllers.

The first time ThinkSystem System Manager is opened on an array that has not been

configured, the **Set Administrator Password** prompt appears. Role-based access management configures four local roles: admin, support, security, and monitor. The latter three roles have random passwords that cannot be guessed. After you set a password for the admin role you can change all of the passwords using the admin credentials. See *ThinkSystem System Manager online help* for more information on the four local user roles.

2. Enter the System Manager password for the admin role in the **Set Administrator Password** and **Confirm Password** fields, and then click **Set Password**.

When you open System Manager and no pools, volumes groups, workloads, or notifications have been configured, the Setup wizard launches.

3. Use the Setup wizard to perform the following tasks:
 - **Verify hardware (controllers and drives)** — Verify the number of controllers and drives in the storage array. Assign a name to the array.
 - **Verify hosts and operating systems** — Verify the host and operating system types that the storage array can access.
 - **Accept pools** — Accept the recommended pool configuration for the express installation method. A pool is a logical group of drives.
 - **Configure alerts** — Allow System Manager to receive automatic notifications when a problem occurs with the storage array.
 - **Enable AutoSupport** — Automatically monitor the health of your storage array and have dispatches sent to technical support.
4. If you have not already created a volume, create one by going to **Storage > Volumes > Create > Volume**.

For more information, see the online help for ThinkSystem System Manager.

Chapter 10. Perform FC-specific tasks

For the Fibre Channel protocol, you configure the switches and determine the host port identifiers.

10.1. Step 1: Configuring the FC switches—Windows

Configuring (zoning) the Fibre Channel (FC) switches enables the hosts to connect to the storage array and limits the number of paths. You zone the switches using the management interface for the switches.

Before you begin

- You must have administrator credentials for the switches.
- You must have used your HBA utility to discover the WWPN of each host initiator port and of each controller target port connected to the switch.

About this task

For details about zoning your switches, see the switch vendor's documentation.

You must zone by WWPN, not by physical port. Each initiator port must be in a separate zone with all of its corresponding target ports.

Steps

1. Log in to the FC switch administration program, and then select the zoning configuration option.
2. Create a new zone that includes the first host initiator port and that also includes all of the target ports that connect to the same FC switch as the initiator.
3. Create additional zones for each FC host initiator port in the switch.
4. Save the zones, and then activate the new zoning configuration.

10.2. Step 2: Determining host WWPNs and making the recommended settings—FC, Windows

You install an FC HBA utility so you can view the worldwide port name (WWPN) of each host port. Additionally, you can use the HBA utility to change any settings recommended in the Notes column of the [Lenovo Storage Interoperation Center \(LSIC\)](#) for the supported configuration.

Before you begin

Guidelines for HBA utilities:

- Most HBA vendors offer an HBA utility. You will need the correct version of HBA for your host operating system and CPU. Examples of FC HBA utilities include:
 - Emulex OneCommand Manager for Emulex HBAs
 - QLogic QConverge Console for QLogic HBAs
- Host I/O ports might automatically register if the host context agent is installed.

Steps

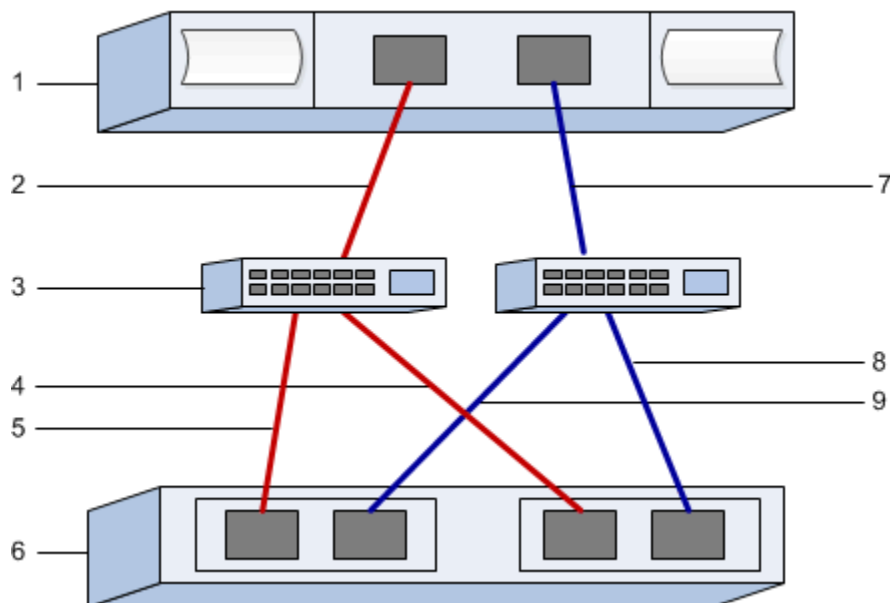
1. Download the appropriate utility from your HBA vendor's web site.
2. Install the utility.
3. Select the appropriate settings in the HBA utility.

Appropriate settings for your configuration are listed in the Notes column of the IMT.

10.3. Step 2: FC worksheet for Windows

You can use this worksheet to record FC storage configuration information. You need this information to perform provisioning tasks.

The illustration shows a host connected to a DE Series storage array in two zones. One zone is indicated by the blue line; the other zone is indicated by the red line. Any single port has two paths to the storage (one to each controller).



10.3.1. Host identifiers

Callout No.	Host (initiator) port connections	WWPN
1	Host	<i>not applicable</i>
2	Host port 0 to FC switch zone 0	
7	Host port 1 to FC switch zone 1	

10.3.2. Target identifiers

Callout No.	Array controller (target) port connections	WWPN
3	Switch	<i>not applicable</i>
6	Array controller (target)	<i>not applicable</i>
5	Controller A, port 1 to FC switch 1	
9	Controller A, port 2 to FC switch 2	
4	Controller B, port 1 to FC switch 1	
8	Controller B, port 2 to FC switch 2	

10.3.3. Mapping host

Mapping host name	
Host OS type	

Chapter 11. Perform iSCSI-specific tasks

For the iSCSI protocol, you configure the switches and configure networking on the array side and the host side. Then you verify the IP network connections.

11.1. Step 1: Configuring the switches—iSCSI, Windows

You configure the switches according to the vendor's recommendations for iSCSI. These recommendations might include both configuration directives as well as code updates.

Before you begin

You must ensure the following:

- You have two separate networks for high availability. Make sure that you isolate your iSCSI traffic to separate network segments by using VLANs or two separate networks.
- You have enabled send and receive hardware flow control **end to end**.
- You have disabled priority flow control.
- If appropriate, you have enabled jumbo frames.



Port channels/LACP is not supported on the controller's switch ports. Host-side LACP is not recommended; multipathing provides the same benefits or better.

11.2. Step 2: Configuring networking—iSCSI Windows

You can set up your iSCSI network in many ways, depending on your data storage requirements.

Consult your network administrator for tips on selecting the best configuration for your environment.

An effective strategy for configuring the iSCSI network with basic redundancy is to connect each host port and one port from each controller to separate switches and partition each set of host and controller ports on separate network segments using VLANs.

You must enable send and receive hardware flow control **end to end**. You must disable priority flow control.

If you are using jumbo frames within the IP SAN for performance reasons, make sure to configure the array, switches, and hosts to use jumbo frames. Consult your operating system and switch documentation for information on how to enable jumbo frames on the hosts and on the switches. To enable jumbo frames on the array, complete the steps in *Configuring array-side networking—iSCSI*.



Many network switches have to be configured above 9,000 bytes for IP overhead. Consult your switch documentation for more information.

11.3. Step 3: Configuring array-side networking—iSCSI, Windows

You use the ThinkSystem System Manager GUI to configure iSCSI networking on the array side.

Before you begin

- You must know the IP address or domain name for one of the storage array controllers.
- You or your system administrator must have set up a password for the System Manager GUI, or you must configured Role-Based Access Control (RBAC) or LDAP and a directory service for the appropriate security access to the storage array. See the *ThinkSystem System Manager online help* for more information about Access Management.

About this task

This task describes how to access the iSCSI port configuration from the Hardware page. You can also access the configuration from **System** > **Settings** > **Configure iSCSI ports**.

Steps

1. From your browser, enter the following URL: <https://<DomainNameOrIPAddress>>

IPAddress is the address for one of the storage array controllers.

The first time ThinkSystem System Manager is opened on an array that has not been configured, the **Set Administrator Password** prompt appears. Role-based access management configures four local roles: admin, support, security, and monitor. The latter three roles have random passwords that cannot be guessed. After you set a password for the admin role you can change all of the passwords using the admin credentials. See *ThinkSystem System Manager online help* for more information on the four local user roles.

2. Enter the System Manager password for the admin role in the **Set Administrator Password** and **Confirm Password** fields, and then click **Set Password**.

When you open System Manager and no pools, volumes groups, workloads, or notifications have been configured, the Setup wizard launches.

3. Close the Setup wizard.

You will use the wizard later to complete additional setup tasks.

4. Select **Hardware**.

- If the graphic shows the drives, click **Show back of shelf**.

The graphic changes to show the controllers instead of the drives.

- Click the controller with the iSCSI ports you want to configure.

The controller's context menu appears.


- Select **Configure iSCSI ports**.

The Configure iSCSI Ports dialog box opens.

- In the drop-down list, select the port you want to configure, and then click **Next**.

- Select the configuration port settings, and then click **Next**.

To see all port settings, click the **Show more port settings** link on the right of the dialog box.

Port Setting	Description
Configured ethernet port speed	<p>Select the desired speed. The options that appear in the drop-down list depend on the maximum speed that your network can support (for example, 10 Gbps).</p> <div style="border: 1px solid #ccc; padding: 10px; margin-top: 10px;">  <p>The optional iSCSI host interface cards in the DE6000H and DE6000F controllers do not auto-negotiate speeds. You must set the speed for each port to either 10 Gb or 25 Gb. All ports must be set to the same speed.</p> </div>
Enable IPv4 / Enable IPv6	Select one or both options to enable support for IPv4 and IPv6 networks.
TCP listening port (Available by clicking Show more port settings .)	If necessary, enter a new port number. The listening port is the TCP port number that the controller uses to listen for iSCSI logins from host iSCSI initiators. The default listening port is 3260. You must enter 3260 or a value between 49152 and 65535.

Port Setting	Description
MTU size (Available by clicking Show more port settings .)	If necessary, enter a new size in bytes for the Maximum Transmission Unit (MTU). The default Maximum Transmission Unit (MTU) size is 1500 bytes per frame. You must enter a value between 1500 and 9000.
Enable ICMP PING responses	Select this option to enable the Internet Control Message Protocol (ICMP). The operating systems of networked computers use this protocol to send messages. These ICMP messages determine whether a host is reachable and how long it takes to get packets to and from that host.

If you selected **Enable IPv4**, a dialog box opens for selecting IPv4 settings after you click **Next**. If you selected **Enable IPv6**, a dialog box opens for selecting IPv6 settings after you click **Next**. If you selected both options, the dialog box for IPv4 settings opens first, and then after you click **Next**, the dialog box for IPv6 settings opens.

10. Configure the IPv4 and/or IPv6 settings, either automatically or manually. To see all port settings, click the **Show more settings** link on the right of the dialog box.

Port setting	Description
Automatically obtain configuration	Select this option to obtain the configuration automatically.
Manually specify static configuration	Select this option, and then enter a static address in the fields. For IPv4, include the network subnet mask and gateway. For IPv6, include the routable IP address and router IP address.
Enable VLAN support (Available by clicking Show more settings .)	Important: This option is only available in an iSCSI environment. It is not available in an NVMe over RoCE environment. Select this option to enable a VLAN and enter its ID. A VLAN is a logical network that behaves like it is physically separate from other physical and virtual local area networks (LANs) supported by the same switches, the same routers, or both.

Port setting	Description
Enable ethernet priority (Available by clicking Show more settings.)	Important: This option is only available in an iSCSI environment. It is not available in an NVMe over RoCE environment. Select this option to enable the parameter that determines the priority of accessing the network. Use the slider to select a priority between 1 and 7. In a shared local area network (LAN) environment, such as Ethernet, many stations might contend for access to the network. Access is on a first-come, first-served basis. Two stations might try to access the network at the same time, which causes both stations to back off and wait before trying again. This process is minimized for switched Ethernet, where only one station is connected to a switch port.

11. Click **Finish**.
12. Close System Manager.

11.4. Step 4: Configuring host-side networking – iSCSI

You must configure iSCSI networking on the host side so that the Microsoft iSCSI Initiator can establish sessions with the array.

Before you begin

- You have fully configured the switches that will be used to carry iSCSI storage traffic.
- You must have enabled send and receive hardware flow control **end to end** and disabled priority flow control.
- You have completed the array side iSCSI configuration.
- You must know the IP address of each port on the controller.

About this task

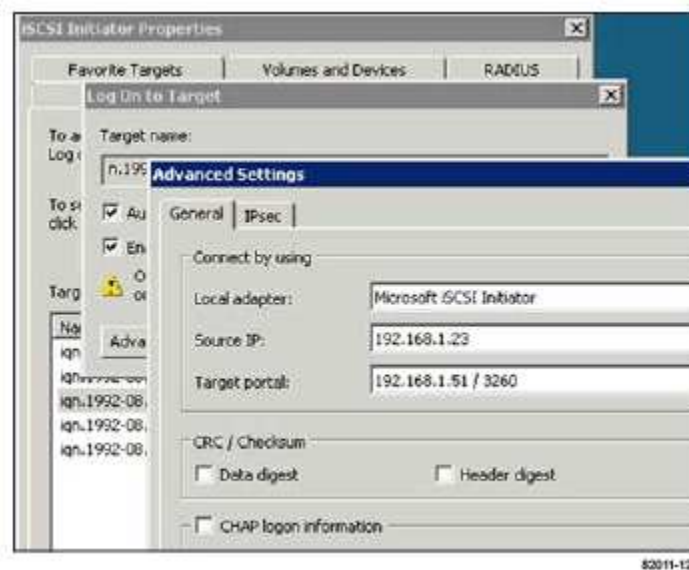
These instructions assume that two NIC ports will be used for iSCSI traffic.

1. Disable unused network adapter protocols.

These protocols include, but are not limited to, QoS, File and Print Sharing, and NetBIOS.

2. Execute `> iscsicpl.exe` from a terminal window on the host to open the **iSCSI Initiator Properties** dialog box.

3. On the **Discovery** tab, select **Discover Portal**, and then enter the IP address of one of the iSCSI target ports.
4. On the **Targets** tab, select the first target portal you discovered and then select **Connect**.
5. Select **Enable multi-path**, select **Add this connection to the list of Favorite Targets**, and then select **Advanced**.
6. For **Local adapter**, select **Microsoft iSCSI Initiator**.
7. For **Initiator IP**, select the IP address of a port on the same subnet or VLAN as one of the iSCSI targets.
8. For **Target IP**, select the IP address of a port on the same subnet as the **Initiator IP** selected in the step above.
9. Retain the default values for the remaining check boxes, and then select **OK**.
10. Select **OK** again as you return to the **Connect to Target** dialog box.
11. Repeat this procedure for each initiator port and session (logical path) to the storage array that you want to establish.



11.5. Step 5: Verifying IP network connections—iSCSI, Windows

You verify Internet Protocol (IP) network connections by using ping tests to ensure the host and array are able to communicate.

1. Select **Start > All Programs > Accessories > Command Prompt**, and use the Windows CLI to run one of the following commands, depending on whether jumbo frames are enabled:
 - If jumbo frames are not enabled, run this command:

```
ping -s <hostIP> <targetIP>
```

- If jumbo frames are enabled, run the ping command with a payload size of 8,972 bytes. The IP and ICMP combined headers are 28 bytes, which when added to the payload, equals 9,000 bytes. The `-f` switch sets the **don't fragment (DF)** bit. The `-l` switch allows you to set the size. These options allow jumbo frames of 9,000 bytes to be successfully transmitted between the iSCSI initiator and the target.

```
ping -l 8972 -f <iSCSI_target_IP_address>
```

In this example, the iSCSI target IP address is **192.0.2.8**.

```
C:\>ping -l 8972 -f 192.0.2.8
Pinging 192.0.2.8 with 8972 bytes of data:
Reply from 192.0.2.8: bytes=8972 time=2ms TTL=64
Reply from 192.0.2.8: bytes=8972 time=2ms TTL=64
Reply from 192.0.2.8: bytes=8972 time=2ms TTL=64
Reply from 192.0.2.8: bytes=8972 time=2ms TTL=64
Ping statistics for 192.0.2.8:
    Packets: Sent = 4, Received = 4, Lost = 0 (0% loss),
    Approximate round trip times in milli-seconds:
        Minimum = 2ms, Maximum = 2ms, Average = 2ms
```

1. Issue a ping command from each host's initiator address (the IP address of the host Ethernet port used for iSCSI) to each controller iSCSI port. Perform this action from each host server in the configuration, changing the IP addresses as necessary.



If the command fails (for example, returns **Packet needs to be fragmented but DF set**), verify the MTU size (jumbo frame support) for the Ethernet interfaces on the host server, storage controller, and switch ports.

11.6. Step 6: Recording iSCSI-specific information for Windows

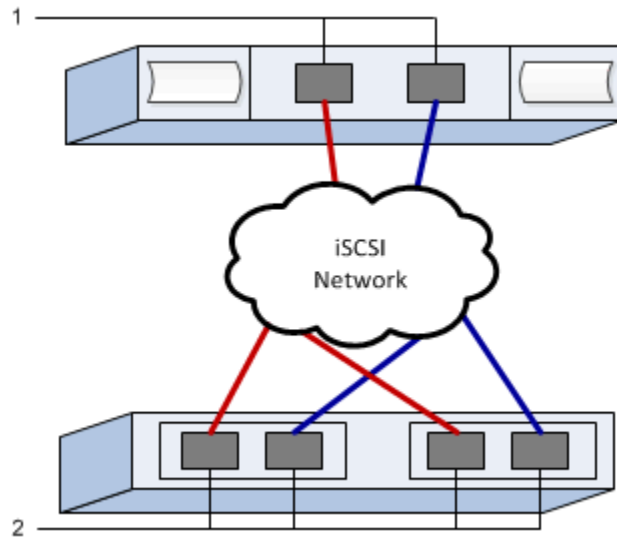
Select the iSCSI worksheet to record your protocol-specific storage configuration information. You need this information to perform provisioning tasks.

11.7. iSCSI worksheet—Windows

You can use this worksheet to record iSCSI storage configuration information. You need this information to perform provisioning tasks.

11.7.1. Recommended configuration

Recommended configurations consist of two initiator ports and four target ports with one or more VLANs.



11.7.2. Target IQN

Callout No.	Target port connection	IQN
2	Target port	

11.7.3. Mappings host name

Callout No.	Host information	Name and type
1	Mappings host name	
	Host OS type	

Chapter 12. Perform SAS-specific tasks

For the SAS protocol, you determine host port addresses and make the settings recommended in the Notes column of the [Lenovo Storage Interoperation Center \(LSIC\)](#).

12.1. Step 1: Determining SAS host identifiers—Windows

For the SAS protocol, you find the SAS addresses using the HBA utility, then use the HBA BIOS to make the appropriate configuration settings.

Before you begin

Guidelines for HBA utilities:

- Most HBA vendors offer an HBA utility. Depending on your host operating system and CPU, use either the LSI-sas2flash(6G) or sas3flash(12G) utility.
- Host I/O ports might automatically register if the host context agent is installed.

Steps

1. Download the LSI-sas2flash(6G) or sas3flash(12G) utility from your HBA vendor's web site.
2. Install the utility.
3. Use the HBA BIOS to select the appropriate settings for your configuration.

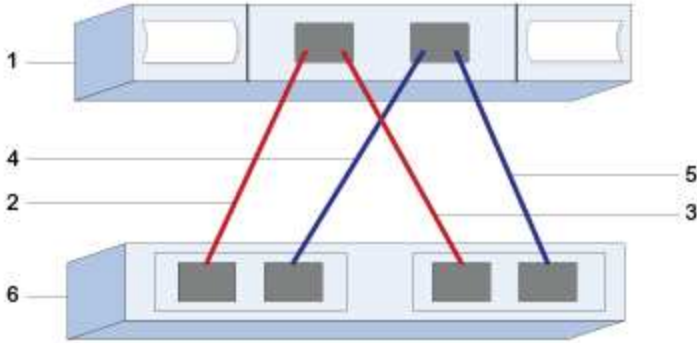
See the Notes column of the [Lenovo Storage Interoperation Center \(LSIC\)](#) for recommendations.

12.2. Step 2: Recording SAS-specific information for Windows

Record your protocol-specific storage configuration information on the SAS worksheet. You need this information to perform provisioning tasks.

12.3. Step 3: SAS worksheet—Windows

You can use this worksheet to record SAS storage configuration information. You need this information to perform provisioning tasks.



12.3.1. Host Identifiers

Callout No.	Host (initiator) port connections	SAS address
1	Host	<i>not applicable</i>
2	Host (initiator) port 1 connected to Controller A, port 1	
3	Host (initiator) port 1 connected to Controller B, port 1	
4	Host (initiator) port 2 connected to Controller A, port 1	
5	Host (initiator) port 2 connected to Controller B, port 1	

12.3.2. Target identifiers

Recommended configurations consist of two target ports.

12.3.3. Mappings host

Mapping host name	
Host OS type	

Chapter 13. Discover storage on the host

LUNs on your storage system appear as disks to the Windows host. When you add new LUNs, you must manually rescan the associated disks to discover them. The host does not automatically discover new LUNs.

Before you begin

You must be logged on as an administrator.

Steps

1. To discover the storage, run the following command from a Windows command prompt.

```
# echo rescan | diskpart
```

2. To verify the addition of new storage, run the following command.

```
# echo list disk | diskpart
```

Chapter 14. Configure storage on the host

A new LUN is offline and has no partition or file system when a Windows host first discovers it. You must bring the volume online and initialize it in Windows. Optionally, you can format the LUN with a file system.

You can initialize the disk as a basic disk with a GPT or MBR partition table. Typically, you format the LUN with a file system such as New Technology File System (NTFS).

Before you begin

The host must have discovered the LUN.

Steps

1. From a Windows command prompt, enter the `diskpart` context.

```
> diskpart
```

2. View the list of available disks.

```
> list disk
```

3. Select the disk to bring online.

```
> select disk 1
```

4. Bring the disk online.

```
> online disk
```

5. Create a partition.

```
> create partition primary
```



In Windows Server 2008 and later, you are prompted immediately after creating the partition to format the disk and give it a name. Select **Cancel** on the prompt to continue using these instructions for formatting and naming the partition.

6. Assign a drive letter.

```
> assign letter=f
```

7. Format the disk.

```
> format FS=NTFS LABEL="New Volume" QUICK
```

8. Exit the `diskpart` context.

```
> exit
```


Chapter 15. Verify storage access on the host

Before using the volume, you verify that the host can write data to the LUN and read it back.

Before you begin

You must have initialized the LUN and formatted it with a file system.

Steps

1. Create and write to a file on the new LUN.

```
> echo test file > f:\\test.txt
```

2. Read the file and verify data was written.

```
> type f:\\test.txt
```

3. To verify that multipath is working, change the volume ownership.

- a. From the ThinkSystem System Manager GUI, go to **Storage > Volumes**, and then select **More > Change ownership**.
- b. On the Change Volume Ownership dialog box, use the **Preferred Owner** pull-down to select the other controller for one of the volumes in the list, and then confirm the operation.
- c. Verify that you can still access the files on the LUN.

```
> dir f:\\
```

4. Find the target ID.



The `dsmUtil` utility is case sensitive.

```
> C:\\Program Files \\(x86\\)\\DSMDrivers\\mppdsm\\dsmUtil.exe -a
```

5. View the paths to the LUN and verify that you have the expected number of paths. In the <target ID> portion of the command, use the target ID that you found in the previous step.

```
> C:\\Program Files \\(x86\\)\\DSMDrivers\\mppdsm\\dsmUtil.exe -g <target ID\\>
```

Chapter 16. Appendix

16.1. Contacting support

You can contact Support to obtain help for your issue.

You can receive hardware service through a Lenovo Authorized Service Provider. To locate a service provider authorized by Lenovo to provide warranty service, go to <https://datacentersupport.lenovo.com/serviceprovider> and use filter searching for different countries. For Lenovo support telephone numbers, see <https://datacentersupport.lenovo.com/supportphonenumber> for your region support details.

16.2. Notices

Lenovo may not offer the products, services, or features discussed in this document in all countries. Consult your local Lenovo representative for information on the products and services currently available in your area.

Any reference to a Lenovo product, program, or service is not intended to state or imply that only that Lenovo product, program, or service may be used. Any functionally equivalent product, program, or service that does not infringe any Lenovo intellectual property right may be used instead. However, it is the user's responsibility to evaluate and verify the operation of any other product, program, or service.

Lenovo may have patents or pending patent applications covering subject matter described in this document. The furnishing of this document is not an offer and does not provide a license under any patents or patent applications. You can send inquiries in writing to the following:

Lenovo (United States), Inc.
8001 Development Drive
Morrisville, NC 27560
U.S.A.
Attention: Lenovo Director of Licensing

LENOVO PROVIDES THIS PUBLICATION "AS IS" WITHOUT WARRANTY OF ANY KIND, EITHER EXPRESS OR IMPLIED, INCLUDING, BUT NOT LIMITED TO, THE IMPLIED WARRANTIES OF NON-INFRINGEMENT, MERCHANTABILITY OR FITNESS FOR A PARTICULAR PURPOSE. Some jurisdictions do not allow disclaimer of express or implied warranties in certain transactions, therefore, this statement may not apply to you.

This information could include technical inaccuracies or typographical errors. Changes are periodically made to the information herein; these changes will be incorporated in new editions of the publication. Lenovo may make improvements and/or changes in the product(s) and/or the program(s) described in this publication at any time without notice.

The products described in this document are not intended for use in implantation or other life support applications where malfunction may result in injury or death to persons. The information

contained in this document does not affect or change Lenovo product specifications or warranties. Nothing in this document shall operate as an express or implied license or indemnity under the intellectual property rights of Lenovo or third parties. All information contained in this document was obtained in specific environments and is presented as an illustration. The result obtained in other operating environments may vary.

Lenovo may use or distribute any of the information you supply in any way it believes appropriate without incurring any obligation to you.

Any references in this publication to non-Lenovo Web sites are provided for convenience only and do not in any manner serve as an endorsement of those Web sites. The materials at those Web sites are not part of the materials for this Lenovo product, and use of those Web sites is at your own risk.

Any performance data contained herein was determined in a controlled environment. Therefore, the result obtained in other operating environments may vary significantly. Some measurements may have been made on development-level systems and there is no guarantee that these measurements will be the same on generally available systems. Furthermore, some measurements may have been estimated through extrapolation. Actual results may vary. Users of this document should verify the applicable data for their specific environment.

16.3. Trademarks

LENOVO, LENOVO logo, and THINKSYSTEM are trademarks of Lenovo. All other trademarks are the property of their respective owners. © 2022 Lenovo.

Lenovo